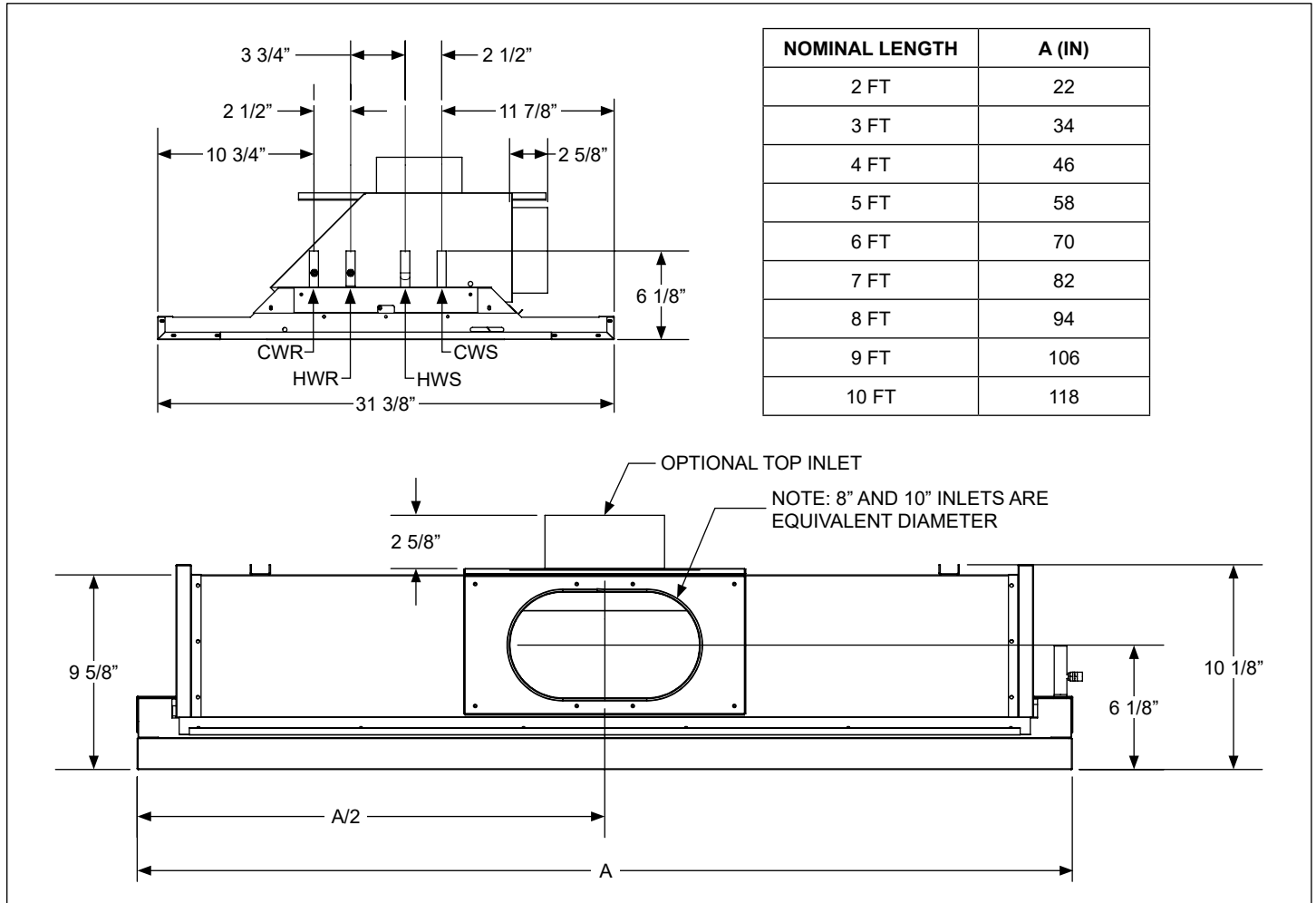


CBE2-24 • Linear Exposed Mounted Chilled Beam • 1-Way & 2-Way Discharge • Horizontal Coil

Top Inlet Configurations



General Description

- 24 inch wide, linear active chilled beam diffuser, available with 1-way or 2-way air distribution.
- Designed with integrated coanda plates for exposed installations.
- 2 to 10 feet chilled beam length in 1 foot increment.
- 2 pipe or 4 pipe coil configurations.
- Casing manufactured with galvanealed G90, 24 gauge sheet metal. Mechanically sealed, leak resistant construction.
- Coil standard with air vent, coil drain and 1/2" water connection, optional sweat or threaded connection.
- Mounting brackets are provided, quantity varies per unit length.
- 4, 5, 6 or 8 inch oval and 10 inch oval inlet connection, located either on the side or top.
- Return face panel assembly is hinged, on both sides, allowing to swing open from either side or to be completely removed and provide easy access to internal components.
- Return face panel assembly available with round perforation or linear bar grille.
- Exterior face, border elements and visible internal components are painted in color of choice. Exposed plenum components painted black. Paint is powder coat, a mix of polyester and epoxy.

Basic Unit Configuration

Beam Width
(nominal- in)

☐ 24

Primary Air Inlet Diameter
Connection (inch)

☐ 4 ☐ 5 ☐ 6 ☐ 8* ☐ 10*

*Note: 8" and 10" are equivalent oval

Coil Type - Water
Side Connection

☐ 2 Pipe - Left Hand
☐ 2 Pipe - Right Hand
☐ 4 Pipe - Left Hand
☐ 4 Pipe - Right Hand

Unit Length (nominal - ft)

☐ 2 ☐ 3 ☐ 4
☐ 5 ☐ 6 ☐ 7
☐ 8 ☐ 9 ☐ 10

Primary Air Inlet
Orientation

☐ Side ☐ Top
☐ Multi-Inlet

Coil Connection -Type

☐ ½ in Sweat (SWT)
☐ ½ in MNPT* (MPT)
☐ ¾ in MNPT* (3PT)

*Note: MNPT required for CBHK hoses.
CBHK hoses ordered separately.

Throw Pattern

☐ F - Same Side as Inlet
☐ B - Opposite Side of Inlet
☐ 2 - Way

Face Pattern

☐ Circular Perforation

Exposed Face Finish
Color

☐ White #26
☐ Black #84

Nozzle Configuration

☐ M13 ☐ M17 ☐ M20
☐ M23 ☐ M27 ☐ M31

Accessories

☐ Lint Screen
☐ Insulation

Hanger Bracket Details

4FT TOP/SIDE INLET CONFIGURATION SHOWN

NOMINAL L LENGTH

F

G

2 FT

3 1/2

NONE

3 FT

4

NONE

4 FT

6

NONE

5 FT

8

NONE

6 FT

8

NONE

7 FT

8

NONE

8 FT

8

22

9 FT

8

25

10 FT

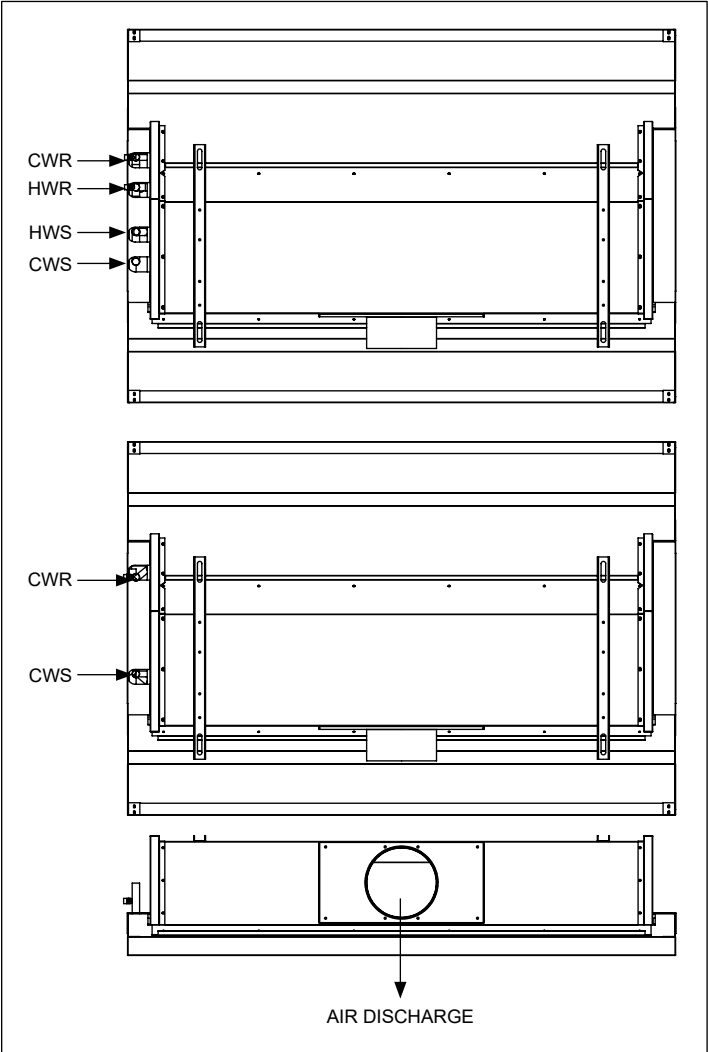
8

30

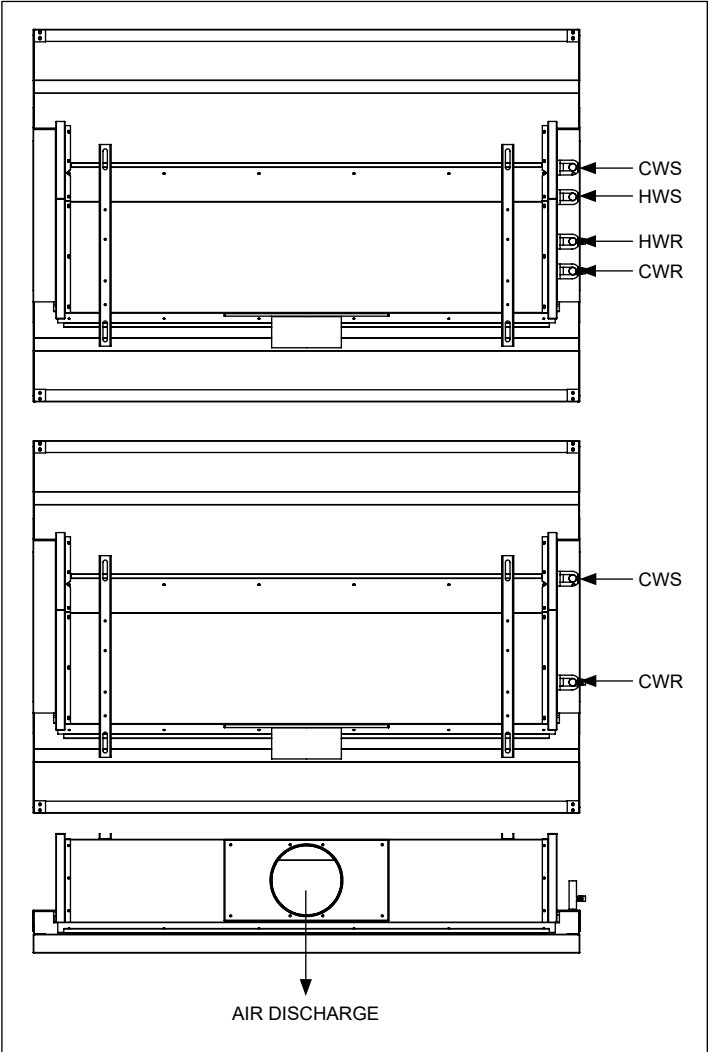
8FT TOP/SIDE INLET CONFIGURATION SHOWN

HANGER RAIL SLOT DIMENSIONS: 3/8" X 1-3/4"

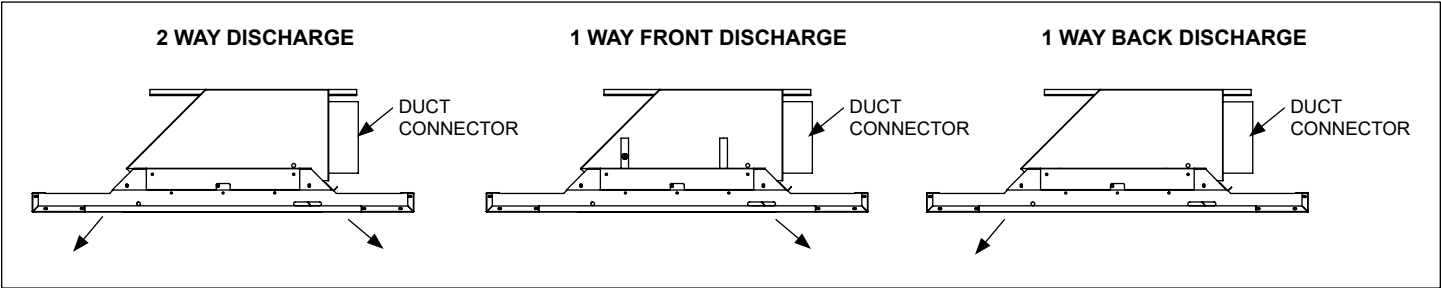
Side Inlet, Discharge and Piping Configuration



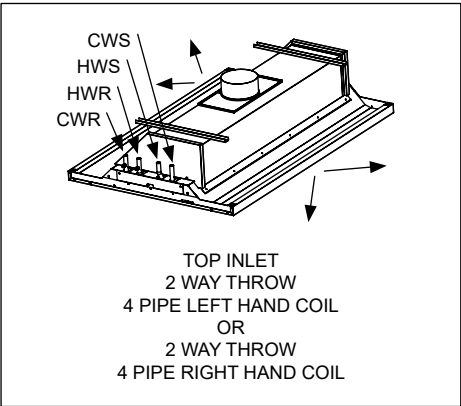
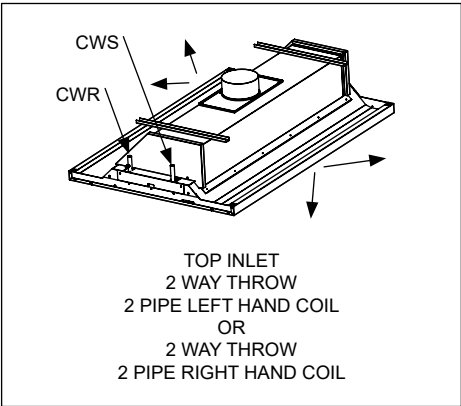
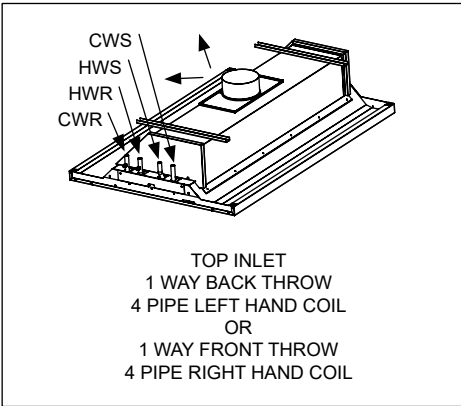
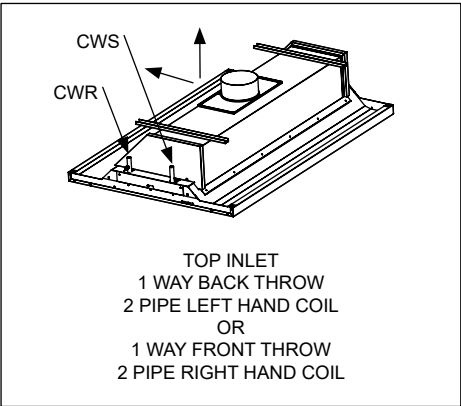
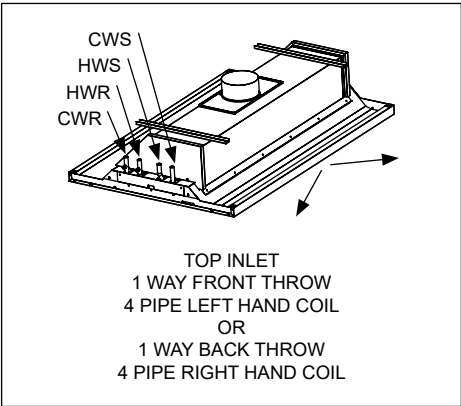
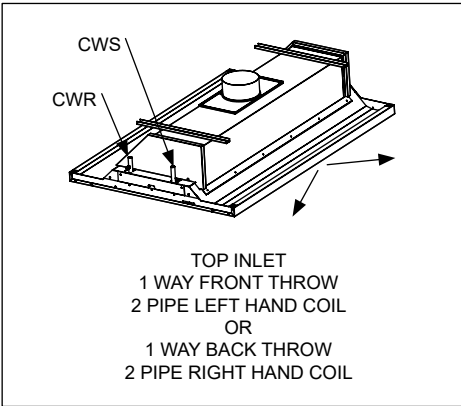
LEFT HAND PIPES



RIGHT HAND PIPES



Top Inlet, Discharge and Piping Configuration



R - RETURN W - WATER S - SUPPLY
HWR - HEATING WATER RETURN HWS - HEATING WATER SUPPLY
CWR - COOLING WATER RETURN CWS - COOLING WATER SUPPLY
*HOT WATER CONNECTIONS ON 4-PIPE COIL ONLY